



SEND Newsletter

June/July/August 2025

Latest News

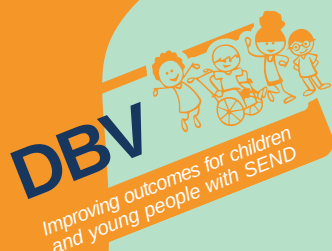
June marked the celebration of one of the most inspiring events in the world of SEND—the annual SEND Awards.



A heartfelt thank you to everyone in our community who took the time to recognise the limitless achievements of our children and young people, as well as the dedication and support of the adults and organisations who uplift them every step of the way, wholeheartedly believing in their potential.

Follow along in the journey of our winners by watching their videos [*SEND Awards 2025*](#)

DBV Celebration



The Delivering Better Value in SEND celebration marked the end of a transformative project.

🎵 Littlecoates and Sunflowers choirs opened the event with an inclusive performance.

DBV provided structure, purpose, and access to expert support, making inclusion central to school improvement. Stronger relationships and shared vision now position the region for growth and innovation.

We know there's more to do—please complete the surveys on confidence in [mainstream settings' ability to support SEND and inclusion](#), and share your ideas for future progress. Your voice is key to keeping the momentum going.

SENDlocaloffer.nelincs.gov.uk



SETTING OF THE MONTH

Queen Mary Avenue Infant and Nursery

Queen Mary Avenue Infant and Nursery School has implemented the All About Attention Programme of Intervention and seem remarkable results.

“This year our Nursery and Early Years Staff introduced the programme to improve children's interest and excitement in learning from adults.

It has been a great success, with attention scores improving enormously between October and May. Staff are thoroughly enjoying the way children become so invested in what might be in the Curiosity Box or the Attention Bucket. The whole scheme has brought fun and laughter along with great progress to our Early Years and Nursery.”

YPAG



Stepping Into Nature and Shaping the Future

This month, our SEND Young People's Advisory Group (YPAG) swapped meeting rooms for mud paths as they joined James Elliot—The Canoe River Cleaner—for a nature walk to explore the environment and uncover the wonders of our local landscape.

It was more than just fresh air and scenic views; it was a hands-on lesson in the unique features and fragility of the world around us, sparking powerful conversations about protecting our planet.

The young people shared their thoughts on Education Health and Care Plans—offering clear, courageous feedback on what's working and where we can do better.

SEND IN THE COMMUNITY

Treasure Seekers at Cleethorpes Library

Every Friday from 9:30am to 1pm

SEND friendly sessions, inclusive and staff are trained in Makaton Level 1

Particularly suited to children with SEN, although anyone who is eligible to attend HAF sessions can attend. Sessions can be booked through NELC's Wonde system, sent to schools.

Treasure Seekers at the Library

- 🧶 Crafts
- 📖 Storytelling
- 🎲 Board Games
- 🏠 Lego building
- 🧸 Puppet making
- ...and more

🧐 We also have a quiet sensory room for children who may become overwhelmed in a group setting. This activity is particularly suited to children who like a quiet, calm setting and those with SEND. We also can offer an option for parents to stay with their child, if necessary.

"[My child] struggles with going places he isn't familiar and can struggle just with certain things out his routine but he has said every time he has been he has loved and wants to go back which is amazing for me as I struggle getting him to go anywhere. He loved getting the little certificates for the little challenges they have been doing and has really enjoy the staff. Thank you for having him in the days he came to you, you have all been brilliant."

HEALTH

Kooth

Kooth offers free, anonymous, online counselling and other mental health and emotional wellbeing support.

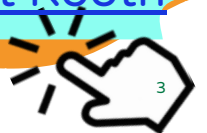
They also have forums, podcasts, and resources for young people.

Their recent mini activities include a coping box, good mood playlist, and being present practice.

[Visit Kooth](#)



[SENDlocaloffer.nelincs.gov.uk](https://sendlocaloffer.nelincs.gov.uk)





SENCO SPOTLIGHT

Helen Hammond, The Academy Grimsby



I've been part of the TEC Partnership for 20 years specialising in supporting students with special educational needs. For the past 8 years, I've had the pleasure of working as the SENCo at The Academy Grimsby. I feel very lucky to have the support and flexibility to create tailored programmes that help our students with Education, Health and Care Plans—and those needing additional support—thrive in a way that works for them.

As education continues to change, we're working closely with the local authority to make sure our students can access the right kind of education for their individual needs. We know that open, honest communication with families is key. By working together, we can provide the consistency and reassurance that young people need to feel secure and succeed.

Being a SENCo definitely comes with its challenges, but it's also incredibly rewarding. It's a real privilege to be part of a dedicated team that makes a difference in the lives of our learners every day.

Events and Training

[NELPCF Drop-in, Cafe Aspire, Various dates](#)

[E-learning, Let's go potty](#)

[Makaton, communicating about general wellbeing, August 11, 6pm-10pm, The Wheatsheaf](#)

[Franklin Adult learning, understanding autism, behaviour that challenges, principals of working with people with learning disabilities](#)

[Supporting your child's social communication skills \(age 0-5\), 12 August, 7pm](#)

[Chatterbug speech and language service offer, parent online drop-in. August 6, 2:30pm-4:30pm](#)





SEND EARLY YEARS

The Early Years Team continues to thrive through collaboration, compassion, and impactful learning.

The Educational Team for Hearing and vision shared powerful insights into supporting children with hearing loss illuminated practical pathways for inclusive care.

We were also delighted by the presence of our Chatterbug colleagues, whose thoughtful goodie bags and expert knowledge brought warmth and value to their speech and language training.

Special thanks to Abi and Jo from TeamEY for their engaging “lite” sensory processing training—an inspiring introduction to an essential area of practice.

Together, these contributions celebrate the heart of what makes our service a true success.

Have your say

As we work toward the launch of a new EHC (Education, Health and Care) hub in February 2026, we are collecting feedback on the current EHC Hub. We kindly ask you to share your experiences with the current system, including what works well and what could be improved. Your feedback is invaluable and will help support the development and implementation of the new Hub.

[EHC Hub feedback](#)



Share your opinions about your confidence in mainstream settings capacity to support students with SEND and inclusion approach of settings. We are interested to know your views about how settings can continue in their journey to be more inclusive.

[Delivering Better Value in SEND, professionals](#)

[Delivering Better Value in SEND, parents and carers](#)

Finance update

If you have any finance-related queries—including funding allocations, delayed payments, or general payment issues—please direct them to our dedicated finance team at senfinance@nelincs.gov.uk. This ensures your query is handled promptly and by the appropriate team.



[SENDlocaloffer.nelincs.gov.uk](https://sendlocaloffer.nelincs.gov.uk)



SPACE FORUM



The SPACE Forum is a collaborative forum designed to support parent carers, educational setting staff, and local services in NEL.

The forum on 8th July was attended by 37 stakeholders and the focus of this forum was for local services within NEL to come and provide an update to the forum members:

- Short Breaks [NELC SEND Local Offer](#) | [Short Breaks and activities - NELC SEND Local Offer](#)
- Neurodevelopmental Service Update [Neurodevelopmental Service :: Navigo](#)
- Linkage Sensory Library [Sensory Outreach Programme](#) | [Linkage Outreach](#) | [Linkage Community Trust](#)



What's On?

There are so many exciting events taking place this summer in North East Lincolnshire. The best way to keep up to date is by taking a look at the link below.

[Families First Facebook](#)



Neurodevelopmental Service

We wanted to let everyone know that responses received for their child's clinical screening outcomes might be delayed whilst we undergo the recruitment process for a vacancy within the team. We understand how important a timely decision is made of your child's referral and we are working hard to continue to make sure that this happens as soon as possible.

Whilst we will continue to do our best to respond to queries as quickly as possible, we are also estimating that our response times may increase to 10 working days during this time. We thank you for bearing with us and kindly ask that if you have emailed/called us once please be assured that we will get back to you as soon as we can.

PREPARATION FOR ADULTHOOD

ASK ANNIE

You can directly text or email us your questions about preparing for adulthood.

Understand the preparation for adulthood process, what should happen and when, transport, education and training, community inclusion and more.

Text: 07585 122306

Email: askannie@nelincs.gov.uk

<https://sendlocaloffer.nelincs.gov.uk/preparing-for-adulthood-and-transition-to-adult-life/ask-annie/>

PFA NEWS

A new video has been launched to showcase the successful supported internship offer at Diana, Princess of Wales Hospital.

Watch as two current interns share their journey from education to gaining valuable work experience, their aspirations for the future, and how their roles today are paving the way toward achieving paid employment.

The Supported Internship Programme is dedicated to empowering individuals with learning difficulties and autism, providing them with the support and tools they need to thrive in the workplace and unlock brighter futures.

[Watch the video](#)



TEXT: 07585 122306

EMAIL: ASKANNIE@NELINCS.GOV.UK

[SENDLOCALOFFER.NELINCS.GOV.UK](https://sendlocaloffer.nelincs.gov.uk)



SEN Support and Getting Extra Help - Awareness Session Training

Do you have concerns about your child's SEND?
Are you just starting out on your child's journey?

The Partnership for Inclusion of Neurodiversity in Schools (PINS) team have asked SENDIASS to deliver a training session free for parent carers.

The aim is to raise awareness of SEN support available and is available to all parent carers who's child does not have an EHCP or do have or may have special educational needs.

Tuesday 14th October 9.30am to 11.30am at Grimsby Town Hall. [Book your place here](#) :



PARENT CARER FORUM



NELPCF have been super busy over the last academic year. We would say it's been our busiest one yet.

We'd like to thank all parent carers for supporting us. Being a parent carer of a child with SEND can at times be challenging but we hope we have helped to support you all as much as possible over the last few months. NELPCF is growing and going to big places.

Over the last year we have attended nearly every school in NELincs and this has been one of our biggest achievements. Building relationships and breaking down barriers is what we are all about. Supporting parent carers that are starting there journey is something we find really special.

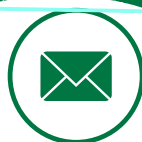
From the whole of the NELPCF team we hope you all have a great summer and remember your not on your own. We will still be about over the holidays but on a very limited basis as we navigate our own home life.

Katy, Courtney, Lisa, Nic, Kayleigh, Ali

SEND Data

Total number of EHCPs held by NE Lincs LA	2181	-
Number of EHCAR requests last month	61	↑
% of EHCPs issued last month within 20 weeks	74%	↓
Number of SEND transport routes	180	↓
Number of CYP with SEND aged 0-25 receiving transport	600	↓
Attendance of pupils aged 5-16 with an EHCP	89.7%	↑
Attendance of pupils aged 5-16 receiving SEN Support	90.5%	↑

Contact us



SEN@nelincs.gov.uk