

## A MESSAGE FROM THE PRINCIPAL

Dear Parents and Carers,

Spring is always a time of change and growth, and that is certainly true across our school at the moment.

Our Year 11 learners are preparing for both their exams and their next steps beyond school. We are incredibly proud of how they are approaching this important time. A key date to note is **Friday 26th June**, when they will leave us to begin their next chapter.

Transitions are also underway for our Year 9 learners, who are starting to think carefully about their BTEC, GCSE and Functional Skills options as they prepare to move into Year 10. It's been lovely to see them beginning to shape their futures with increasing confidence. Looking ahead, we are excited to welcome our new Year 7 learners in Summer 2 for their transition days - always a special moment in the school year.

The Summer term will also bring many highlights, including Sports Day, Prom, the Year 11 leavers' trip, Duke of Edinburgh expedition, the Year 9 PGL residential, and whole-school trips - all wonderful opportunities for our learners to build confidence, independence and lasting memories.

Thank you for your continued support, particularly your contributions towards our updated Behaviour Policy, which will be available on the school website from 1st April. Alongside staff training in line with current UK guidance on restrictive intervention, we are continuing to see a reduction in suspensions, behaviour incidents and physical interventions. This reflects the strength of our relational approach and the positive partnership we share with you.

As always, we remain committed to supporting every learner, recognising the wide range of needs across our school. This is only possible with your continued support and empathy towards the diverse needs we support.

Thank you for being such an important part of our school community.

## CAREERS

This half term KS3 and Foundation learners have been looking at the manufacturing industry. They have been exploring what the manufacturing industry is, and the different types of careers within the field.

It has been a busy half term for our year 11 learners. They have been busy completing their work experience placements, and the learners who will be going to Linkage College have been completing their transition days - which they have all loved.



### Careers Fact of the term!

Labour Market Information (LMI) Did you know what the future trends are in Grimsby.

- There is high demand for the skills trades, such as electricians, construction, logistics staff, and positions in the green energy sector.

### NELC EHCP HUB

North East Lincolnshire local authority has moved to a new system for parents and carers to access their child's EHCP and contribute to the annual review process. We have previously sent out instructions about how to access the new portal, however, if you are still having difficulties, please contact [ehchub@nelincs.gov.uk](mailto:ehchub@nelincs.gov.uk) and the local authority will resolve them.

### KURLING COMPETITION

This term saw our young kurlers participate in the final of their Kurling competition at the Allum sports centre in Hull. From 8 matches on the day we won 4 and very narrowly lost the other 4.

This was a massive achievement given that a total of 80 schools entered the competition and the Orchard team finished within the top 10. Well done!



## BLOOKET CLUB

Our cross-school lunchtime Blooket Club has been a fantastic way for learners to come together, have fun, and build their knowledge through interactive quiz games. Using Blooket, pupils have taken part in a range of themed challenges, including National Holidays such as Valentine's Day and St Patrick's Day, as well as global events like the Winter Olympics.

The club promotes teamwork, friendly competition, and recall of key knowledge, all within a supportive and inclusive environment. It has been great to see so many learners engaged and enjoying learning beyond the classroom.



## WORLD BOOK DAY!

Learners took part in a full itinerary of reading activities for World Book Day on 5th March. We accessed a 'Footy and Booky' quiz as a whole school, created our favourite characters out of potatoes and welcomed a local SEND author, Leanne Thompson, who provided a creative writing session for our students. We opened up classrooms for a 'drop everything and read' session and KS4 learners created poems and scripts on their Chromebooks. It was a fantastic day.



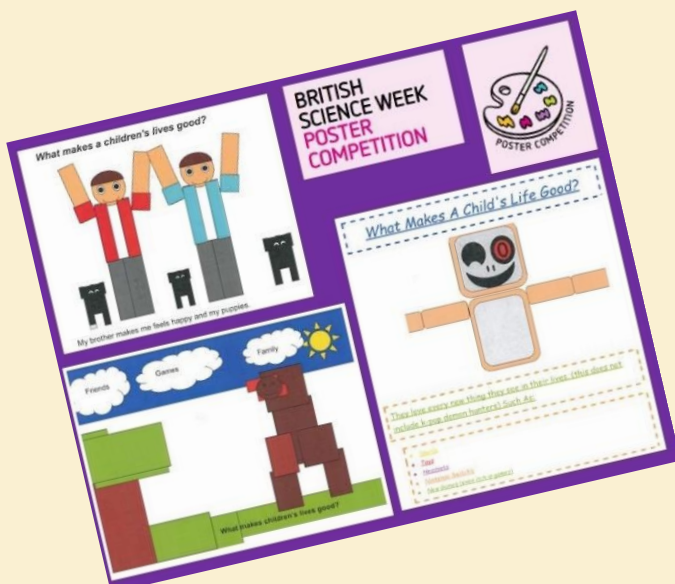
## PLP - ECONOMIC EDUCATION

This term we have utilised our PLP time to learn about finances. We have been looking at different ways to pay, managing a budget, appropriate spending choices and also why it is important to keep track of spending and saving. We were proud to see our learners put their knowledge into practice by creating their own stalls, selling items and spending their money.



## BRITISH SCIENCE WEEK

As part of their Orchard in the Community, learners have been taking part in British Science Week. Some of our students have explored topics of curiosity and sustainability in practical nest and dinosaur habitat building activities. Others have had a go at making a poster for the British Science Week competition and tried to answer the question, "What makes a good childhood?"



## CURRICULUM OVERVIEW - SUMMER 1

	Foundation	KS3	KS4
English	Fiction Cumulative Tale	Book & Film Study 'Wonder'	Creating a Magazine
Mathematics	Number Division (Fractions & Time)	Shape & Geometry	Handling Data & Arithmetic Consolidation
ICT	Google Sheets (Google Classrooms)		
Science	Chemistry - Electricity & Electrical Circuits		Chemistry - Eco Systems
PSHE	Financial Health & Wellbeing		Relationships - Sexual Health Awareness
Human & Social	History - Medieval Peasants & the Black Death		History - Local History (Fishing)
People and the Community	Living - God: Our World		Living & Thinking - Rites of Passage: Peace & Conflict
Aesthetic & Creative Arts	Sculpture - Claes Oldenburg		Sculpture - Alexander Calder
Talkabout	Social Skills Programme - Assertiveness		
Vocational Studies	PLP - Financial Education & Enterprise		BTEC - Preparation for Adulthood, Enterprise and Travel Training

## SAFEGUARDING INFORMATION

If you are needing assistance regarding a potential safeguarding concern during the half term, there are services there to help: -

- Integrated front Door (Children's Services) Members of the public and professionals can call the IFD on 01472 326292 (option 2, option 2) (Monday to Thursday 8.30am to 5pm and Friday 8.30am - 4.30pm).
- Report a concern to Children's Services - [SaferNEL | Report a concern - SaferNEL](#)
- Children's Social Care also run the Emergency Duty Team (EDT), which you can contact on 01472 326292 (option 2).
- All members of staff will be on a well-deserved break; however, the DSL will be checking the Orchard safeguarding telephone at points throughout the half term. Please use the numbers above in case of emergency.

# to Safeguard Children



## Key Changes & Expectations



### 1. Clear Accountability

- Defined roles across agencies
- No more ambiguity – know **who's responsible**
- Stronger expectations for **leadership**



### 5. Information Sharing Clarity Over Caution

- GDPR **not** a barrier to safeguarding
- Duty to **share if risk** suspected
- **Proactive**, not passive



### 2. Strengthened Multi-Agency Working

- Integrated plans & joint decision-making
- Focus on **impact**, not just processes
- Sustainable funding & **governance**



### 6. Tackling **Complex Risks**

- ✓ Exploitation, criminal abuse
- ✓ Online & peer-on-peer harm
- ✓ **Contextual** safeguarding needed



### 3. Child-Centred Practice Hear the Child • See the Child

- Lived experience matters
- **Relational**, not just procedural
- **Whole-child** approach



### 7. Learning from Serious Cases

- Lessons must lead to **change**
- Accountability for improvements
- Focus on **real impact**



### 4. Early Help = Core Duty Early Intervention Priority

- ➔ Identify need early
- ➔ Act before crisis point
- ➔ Support families to **thrive**



### 8. Schools' Safeguarding Role

- Key **partners**, not just referrers
- Lead on early help & strategy
- **Active** in multi-agency work

## Safeguarding is Evolving From...

**Compliance**



**Collaboration**



**Impact**



### What This Means in Practice:



**Proactive Support**



**Stronger Partnerships**



**Cultural Change**



**Child-Focused Decisions**



## ONLINE SAFETY

When Something Goes Wrong Online - it is difficult sometimes to know what to do. At the end of the newsletter, we have attached some useful guidance to aid parents/carers to respond confidently if your child experiences something upsetting whilst using their devices.

## DATES AND EVENTS

### Dates for Summer 1

**Friday 27<sup>th</sup> March** - Children break up for Easter

**Monday 13<sup>th</sup> April** - Children return to school

**Friday 24<sup>th</sup> April** - National Earth Day & Forest School

**28<sup>th</sup> and 30<sup>th</sup> April** - KS4 visit to Fishing Heritage Centre

**Friday 8<sup>th</sup> May** - VE Day Party

### **Reminder of GCSE examination dates:**

Mathematics component 1 - **Thursday 14<sup>th</sup> May**

English Language component 1 - **Thursday 21<sup>st</sup> May**

Mathematics component 2 - **Wednesday 3<sup>rd</sup> June**

English Language component 2 - **Friday 5<sup>th</sup> June**

### Dates for Summer 2

**Friday 12<sup>th</sup> June** - Enterprise Day

**Wednesday 17<sup>th</sup> June** - Sports Day

**Friday 19<sup>th</sup> June** - Year 11 Flamingo Land Trip

**Friday 26<sup>th</sup> June** - School Prom (Held at Sargon Way - Optional activity)

**Friday 26<sup>th</sup> June** - Year 11 last day

**1<sup>st</sup> - 3<sup>rd</sup> July** - PGL for year 9 learners

**Thursday 9<sup>th</sup> July** - Parents Evening

**Friday 10<sup>th</sup> July** - Aqua Park & Yorkshire Wildlife Park

**Monday 13<sup>th</sup> July** - Welcome event for parents/carers of September 2026 starts

**Wednesday 15<sup>th</sup> July** - Awards Ceremony



## When Something Goes Wrong Online — A Simple Action Plan for Parents

### 1. Stay Calm First

If your child tells you something worrying:

- Thank them for telling you
- Avoid blaming or panicking
- Reassure them: "We'll deal with this together."

### 2. Keep the Evidence

- Take screenshots (include usernames and dates)
- Save messages
- Keep profile links



scan the QR code with your phone's camera for Parent Guides on how to help keep your children safe online

### 3. Use Official Reporting Routes

Grooming or exploitation – CEOP: [www.ceop.police.uk/safety-centre](http://www.ceop.police.uk/safety-centre)

Illegal images – Internet Watch Foundation: [www.iwf.org.uk/report](http://www.iwf.org.uk/report)

Nude images shared (under 18s) – Report Remove: [www.childline.org.uk/info-advice/bullying-abuse-safety/online-mobile-safety/report-remove](http://www.childline.org.uk/info-advice/bullying-abuse-safety/online-mobile-safety/report-remove)

If in immediate danger, call 999.

### 4. If You Feel Overwhelmed - Use Structured Support

You can use free ChatGPT to help structure next steps.  ChatGPT

Free access: <https://chat.openai.com> Example prompts:

- My child received inappropriate messages. What steps should I take in the UK?
- How do I report online grooming?
- What should I say to my child after cyberbullying?

**Important:** ChatGPT is a support tool and does NOT replace official reporting or police action.



### 5. Ongoing Protection at Home

- Keep regular, calm conversations
- Review privacy settings together
- Monitor gaming contacts
- Encourage early disclosure

Children will make mistakes online, just as they do offline.

Trust and communication protect them more than punishment.



**Online safety is when young people know who they can tell if they feel upset by something that has happened online.**

Working with Home Office 'PREVENT', The Police and Crime Commissioner and Children's Safeguarding Partnerships to help keep children safe online.

**Skips Educational** Email: [info@skipsed.com](mailto:info@skipsed.com) Tel: +44 121 227 1941

Developed in partnership with

